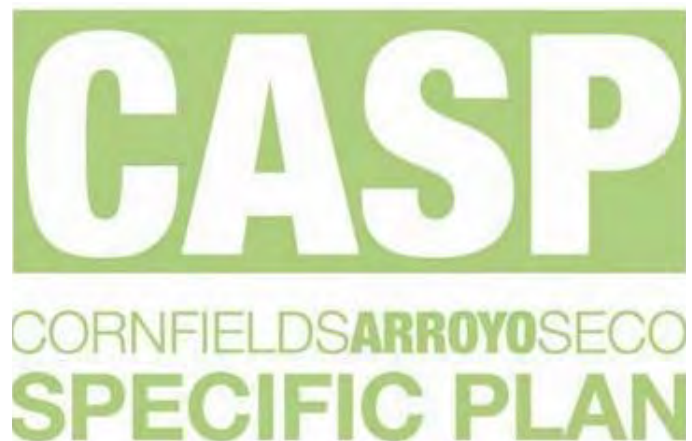
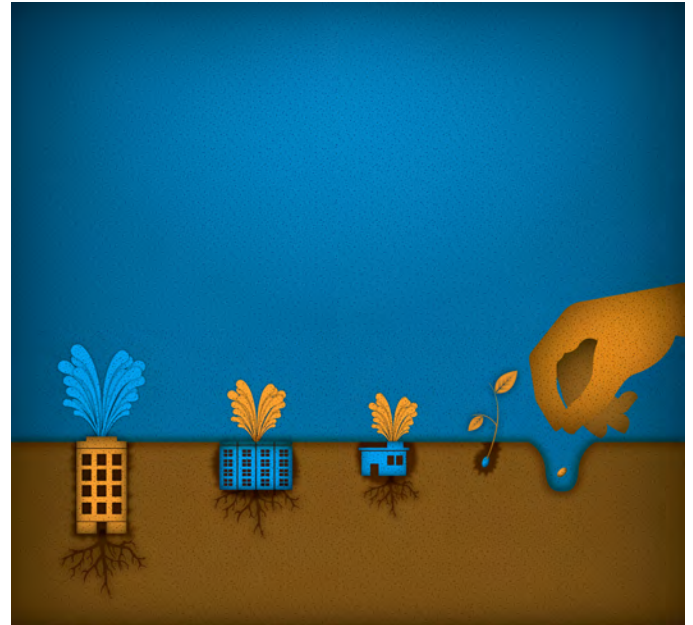


7. **P**RODUCE green buildings.

ACCOMPLISHMENTS

- Developed and steered through Council approval of one of the most aggressive green building ordinances of any large city in the nation.
- Achieved approval of the River Improvement Overlay (RIO) enabling ordinance, creating the first RIO for the Los Angeles River (LARIO), encouraging buildings and design that relate to the context of the river.
- Approved the Cornfield Arroyo Seco Specific Plan (CASP), which has already been named as one of the nation's first Leadership of Energy and Environmental Design in Neighborhood Development (LEED-ND) projects with multiple owners. The Plan provides for conservation measures, water management tools, and reduced parking requirements to encourage green building and sustainable communities around two Gold Line stations.
- Achieved final City Council adoption of a Zoning Code Amendment to provide increased flexibility for solar structures.
- Approved the Green Building Maintenance Ordinance facilitating the new statewide CALGREEN building code by replacing references to LEED with L.A. Green.
- Achieved final City Council adoption of the Permeable Paving Ordinance, in accordance with the Low Impact Development Ordinance, to clarify which permeable paving materials can be used in parking lots and driveways.
- Achieved final City Council adoption of the Solar Zoning Ordinance that provides increased flexibility for incorporating solar structures into all types of projects.



“We are late to the party. The City’s codes must be overhauled to require, or at the very least incentivize, building materials, systems, and methods that are health conscious and environmentally friendly. We planners should not wait for such new rules to hit the books. Let’s announce today a menu of **benefits** that any developer who will commit **to building a LEED certified project** can expect in return from our department.”

Do Real Planning (2007)
As Originally Issued by Los Angeles City Planning Commission

