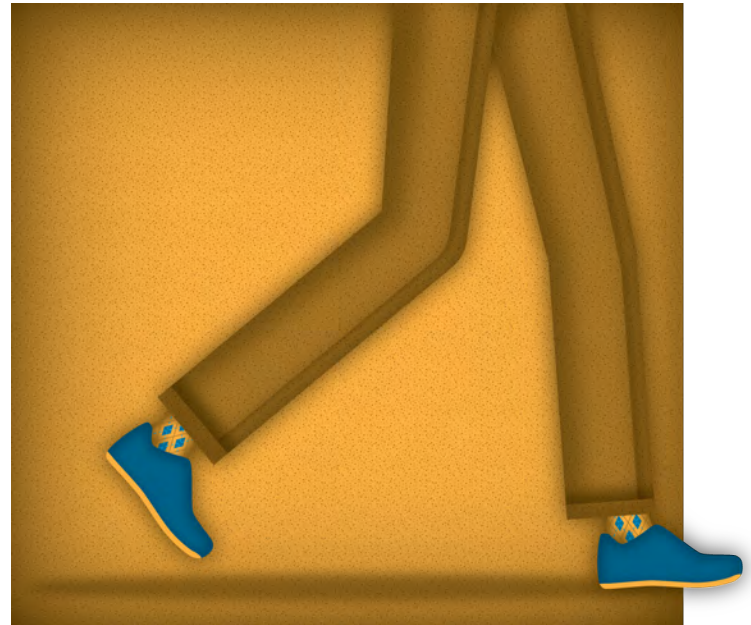


1. DEMAND

a walkable city.

ACCOMPLISHMENTS

- Created the City's first Urban Design Principles to assist in the development of the City, a Walkability Checklist to make projects more pedestrian-friendly, and new pedestrian-friendly Street Standards for downtown Los Angeles, while "raising the bar" for design quality in key, catalytic projects throughout the City.
- Played a leadership role in developing "Streets 4 People," a pilot program to create small parks, bicycle facilities or pedestrian amenities using excess right-of-way.
- Played a leadership role in reinventing Los Angeles' major commercial centers as pedestrian-friendly districts, including the "Greening of Century City" initiative, and a significant overhaul to make the Warner Center Specific Plan more transit-oriented and human-scaled.
- Led a new emphasis on the intersection of land use planning and public health, creating collaborations with the L.A. County Department of Public Health that is now resulting in preparation of a Health and Wellness Chapter of the General Plan Framework.
- Created a new Supplemental Use District (SUD) through a zoning code amendment to tailor parking needs on a local community level, providing opportunities for pedestrian enhancements.
- Approved numerous Residential Accessory Service (RAS) zone changes to properties throughout the City, facilitating mixed use projects in commercial areas.



“The answer to one question, more than any other, will tell us whether a project has it right: **Does the proposal actively welcome its own users, its neighbors, its passersby?** The planning history of Los Angeles exposes our failure to analyze buildings in context. Smitten by the automobile, we trivialized our daily role as pedestrians, our need for inviting storefronts, broad sidewalks, plentiful benches, and graceful lighting. We must prioritize the human scale of our built structures and street environments. We must insist that each new project **visibly knit people together.**”

Do Real Planning (2007)
As Originally Issued by Los Angeles City Planning Commission

